

Final Notice and Public Explanation of a Proposed Activity in a Federal Flood Risk Management Standard Designated Floodplain

To: All interested Agencies, Groups and Individuals,

This is to give notice **Terrebonne Parish Consolidated Government (TPCG)** under 24 CFR Part 58 has conducted an evaluation as required by **Executive Order(s) 11988, as amended by Executive Order 13690, and/or Executive Order 11990**, in accordance with HUD regulations at 24 CFR 55.20 in Subpart C Procedures for Making Determinations on Floodplain Management and Wetlands Protection. The activity is funded under the **Resilient Communities Infrastructure Program (RCIP) Project Number 55LDRC7703**. The proposed project(s) is located **along Main Street from Saint Charles Street to New Orleans Boulevard and Grand Caillou Road to Howard Avenue in Houma, Terrebonne Parish, Louisiana** and is located in the **Federal Flood Risk Management Standard (FFRMS) floodplain**. The extent of the FFRMS floodplain was determined using **0.2 percent flood approach**. **The Main Street Improvements Project will include a “complete streets” retrofit aiming to rebuild and improve the transportation infrastructure. The Proposed Project will include the transformation of a highly trafficked portion of Main Street, approximately 2 miles, to include components such as earthwork to elevate sidewalks, enhancing the area’s drainage capabilities; updated pedestrian infrastructure; new road signage; and the installation of tree/greenery plantings for environmental benefits. The project area will partially take place within FFRMS SFHA Flood Zone X, 0.2% annual chance flood hazard in coastal zone, and Flood Zone AE, coastal floodplain. The proposed improvements will take place entirely on land. The roadway improvements will minimize impacts to the floodplain and improve drainage for the area.**

TPCG has considered the following alternatives and mitigation measures to minimize adverse impacts and to restore and preserve natural and beneficial functions and intrinsic values of the existing floodplain: **The project will improve transportation safety, accessibility, and economic resilience in the Houma Historic Cultural District. The project will help to improve stormwater drainage for the area through improvement of its stormwater drainage system and installation of green infrastructure that will help to capture stormwater for its use. Alternatives were considered and were determined that they would not provide the same benefit as the proposed project. The project will be in compliance with state and local floodplain protection procedures. The flood insurance rate maps developed by FEMA were adopted by TPCG on August 23, 2023 (FIRM Panel ID Nos. 22109C0252E and 22109C0252E, effective September 7, 2023.)**

TPCG has reevaluated alternatives to building in the **floodplain** and has determined that it has no practicable alternative to **floodplain** development. Environmental files documenting compliance with **Executive Order 11988, as amended by Executive Order 13690**, are available for public inspection, review and copying upon request at the times and location delineated in the last paragraph of this notice for receipt of comments.

There are three primary purposes for this notice. First, people who may be affected by activities in the **floodplain** and those who have an interest in the protection of the natural environment should be given an opportunity to express their concerns and provide information about these areas. Second, an adequate public notice program can be an important public educational tool. The dissemination of information and request for public comment about the **floodplain** can facilitate and enhance Federal efforts to reduce the risks and impacts associated with the occupancy and modification of these special areas. Third, as a matter of fairness, when the Federal government determines it will participate in actions taking place in the

floodplain, it must inform those who may be put at greater or continued risk. Written comments must be received by the **TPCG** at the following email address on or before **July 10, 2026**:
terrebonneenvironmental@westwoodps.com. A full description of the project may also be reviewed below.

Problem Definition

Instructions:

- All required fields are marked with an *.
- Given you have the proper permissions, use the **SAVE** button to save information and calculate data on each page.
- Save at least every 30 minutes to avoid losing data.

Please fill out the sections below or provide attachments with requested information.

Provide a comprehensive description of the problem this project will address. Including, but not limited to:

- **What are the expected results?**
- **Is this a new/existing problem?**
- **What was the previous use of the site?**
- **Does the problem affect a historic area?**

Terrebonne Parish experienced catastrophic damage as a result of Hurricane Ida with its 150 mph winds of a Category 4 hurricane. For months after the storm, electricity and water utilities were not functioning and roads were blocked by downed trees, utility poles and other debris, making them impassable. There was extensive damage to the downtown area in Houma to businesses, housing units and basic infrastructure including the total collapse of historical buildings.

Terrebonne Parish Consolidated Government (TPCG) has felt the economic repercussions of successive hurricanes and flooding disasters. The Parish has seen a reduction in job opportunities and a trend of young graduates leaving the Parish in pursuit of opportunities elsewhere in the State and region. Additionally, the damage to infrastructure, including transportation networks, has made it more difficult for residents and businesses to quickly recover and thrive, underscoring the need for strategic investments in economic revitalization efforts.

Given these challenges, the proposed Main Street Improvements Project, focused in downtown Houma within the Houma Historic Cultural District, features a "complete streets" retrofit aiming to rebuild and improve the transportation infrastructure in a way that supports both immediate recovery and long-term resilience. By transforming the Main Street downtown corridor into a "complete streets" improvement, the project will enhance accessibility for all users, stimulate economic activity, and create a safer, more connected environment. This initiative is crucial for fostering economic revitalization, supporting local businesses, and ensuring that Terrebonne Parish can be more resilient in the face of future challenges.

Main Street/LA-24 is currently a Louisiana State Road, although the Parish has a pending request for transfer of ownership from the Louisiana Department of Transportation and Development (LADOTD). The Parish will undertake all necessary permit steps to receive approval for work on the state road. The Main Street Improvements project is also a pedestrian safety initiative with integrated "complete streets" components, aimed at bringing pedestrian traffic back to the Downtown Houma District. Spanning 2.5 miles of Main Street/LA-24 between St. Charles Street and Howard Avenue, this corridor passes through both residential and commercial areas and is in urgent need of safety enhancements for pedestrians in order to revitalize this commercial area.

The current conditions along Main Street reveal deficiencies that put non-motorists at risk, particularly those residents in the surrounding low-to moderate income neighborhoods who rely on walking access or public transportation. These issues include deteriorating pedestrian infrastructure, an absence of signalized crosswalks, and an absence of safety features. There is also an impact on those with disabilities or requiring special mobility accommodations who face additional challenges navigating the existing streetscape.

Statistics support the importance of this project. Louisiana ranked 6th in rates of pedestrian deaths in the Nation in Smart Growth America's annual "Dangerous by Design" 2022 report. The Houma-Thibodaux area was ranked 2nd highest in the State on the Pedestrian Danger Index in the 2019 report, based on 2011-2017 data. The Main Street corridor (also known as LA-24) has been a concern for years, having experienced a high number of pedestrian crashes, numbering at 36 between 2008-2011.

The 2023 Main Street Corridor Plan underscored the importance of transforming the Main Street corridor into a "complete streets" concept to enhance the pedestrian experience within this historic district, which is crucial for revitalizing the downtown area. This Main Street Improvement project supports the "complete streets" concept by including attractive streetscape designs featuring landscaping with tree planting, traffic calming measures, signalized crosswalks, and increased signage. These enhancements will not only create a vibrant and economically supportive downtown but also contribute to the area's resilience by incorporating stormwater-absorbing landscaping and mitigating the heat island effect. This project is essential in fostering community, supporting local commerce, and driving the economic revitalization of Downtown Houma. The improvements will take place in an Historic District, but here will be negative impact to the historic buildings along Main Street.

DISASTER RECOVERY ACTIVITY INFORMATION

Does the proposed project have a tie to at least one of the 2020/2021 disasters?

Yes

No

Which disaster does the project tie back to? Select all that apply.

Hurricane Laura

Hurricane Ida

Hurricane Delta

May Flood

Explain the project rationale for the tie-back to the disaster(s):

Hurricane Ida made landfall in Southeast Louisiana in August 2021, bringing 150-mile-per-hour winds that picked up debris and caused significant damage to several homes and businesses, leading to widespread devastation in Houma. Specifically, there were an estimated 750 buildings substantially impacted, 250 of which were destroyed. The Main Street corridor, home to many historic storefronts, suffered both physical and economic damage, exacerbating existing blight and vacancies. Main Street now struggles with recovery and economic revitalization due to vacancies, disrepair and scattered occupancy.

The low to moderate income areas along Main Street were particularly hard hit. In response, TPCG is committed to revitalizing this area to create economic opportunities for returning residents. By attracting shoppers and visitors, the proposed improvements aim to facilitate the economic recovery of the parish. Downtown hosts local fairs, festivals, and fundraisers for local non-profits which is an economic driver in the Spring and Fall.

Per FR-6303-N-01, HUD requires that grantees demonstrate that they have incorporated mitigation measures into CDBG-DR activities as a construction standard to create communities that are more resilient to the impacts of the recurring natural disasters and the impacts of climate change.

Describe the resiliency efforts and/or performance metrics applicable to this activity.

This complete street transformation under the Main Street Improvements project is a vital component in boosting downtown Houma's resilience, providing both immediate and long-term benefits that will help the community withstand and recover from natural disasters. These efforts consist of adaptable, sustainable investments that will be stronger in the face of adverse weather conditions and contribute to economic resiliency post disaster.

Incorporating components of a "complete streets" design contribute to resiliency by incorporating green infrastructure elements like permeable pavements, rain gardens, and tree canopies that manage stormwater, reduce urban heat islands, and enhance overall environmental quality. Additionally, the design prioritizes safe, multi-modal transportation, ensuring accessibility during emergencies and promoting economic stability by creating an inviting environment that supports local businesses. By integrating these features, "complete streets" not only improves the daily quality of life but also strengthen the community's capacity to recover from the impact of future storm events.

The performance metric will be the linear feet of improvements along the Main Street in the project area.

MITIGATION ACTIVITY INFORMATION

Per FRN-6368-N-01, HUD defines mitigation activities as those activities that increase resilience to disasters and reduce or eliminate the long-term risk of loss of life, injury, damage to and loss of property, and suffering and hardship, by lessening the impact of future disasters.

Does the proposed project meet the definition of a mitigation activity?

Yes

No

Describe the mitigation aspects, including performance metrics applicable to this activity.

In response to Terrebonne Parish's challenges in recovery after Hurricane Ida, the proposed Main Street Improvements projects offer a "complete streets" transformation aiming to enhance the area's economic resilience. This project will improve access, connectivity, and safety for all users throughout the downtown area. By creating attractive, pedestrian-friendly environments, the project will support local businesses in recovering more quickly by drawing customers safely back to the area.

The project also provides significant environmental benefits. The incorporation of green infrastructure, including stormwater management systems, will reduce flooding risks and minimize the burden on local drainage systems during heavy rain events. Additional environmental benefits aim to include a reduction in urban heat island effects, improved air quality through reduced emissions, and enhanced carbon storage and sequestration.

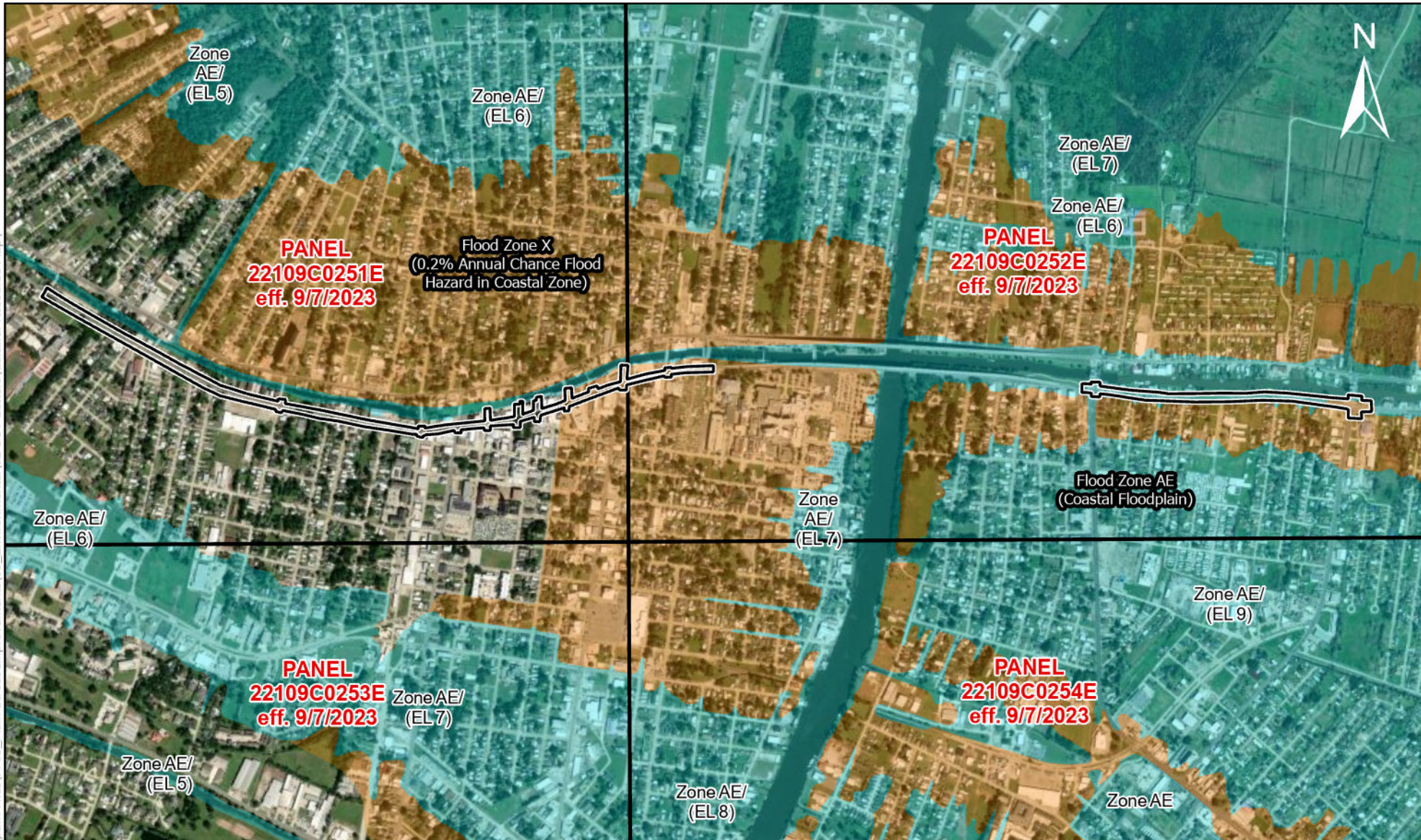
Overall, the project is designed to reduce vulnerability to economic downturns caused by natural disasters and establish a foundation for enduring recovery. By increasing mobility options and improving infrastructure resilience, this initiative addresses both immediate economic challenges and prepares the community to better withstand and recover from future storm events. The performance metric will be the linear feet of improvements along the Main Street in the project area.

Flood Risk Information

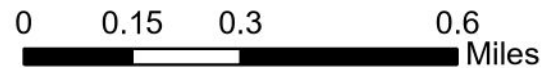
Attach the appropriate flood profile and discharge tables, if applicable, from the Flood Insurance Study with the project site and elements / improvements marked. Please see the Flood Insurance Study Attachment Examples ([Appendix 2](#)) for guidance.

Upload here:

Folder: C:\Box\Terrebonne CDBG-DR - Program Files\7703_Main Street Improvements\03_Environmental\02_SOV Letters\Cultural Resource Map\



Flood Hazards Map



Legend

- APE
- FIRM Panels
- Flood Hazard Zones**
- 1% Annual Chance Flood Hazard
- Regulatory Floodway
- Special Floodway
- Area of Undetermined Flood Hazard
- 0.2% Annual Chance Flood Hazard
- Future Conditions 1% Annual Chance
- Area with Reduced Risk
- Area with Risk Due to Levee

Terrebonne Parish RCIP
Main Street Improvements Project
Houma, Terrebonne Parish, Louisiana



Project Name: Main Street Improvements Project
Project Number: 222023
Date: 06/10/2026
Drawn By: SES