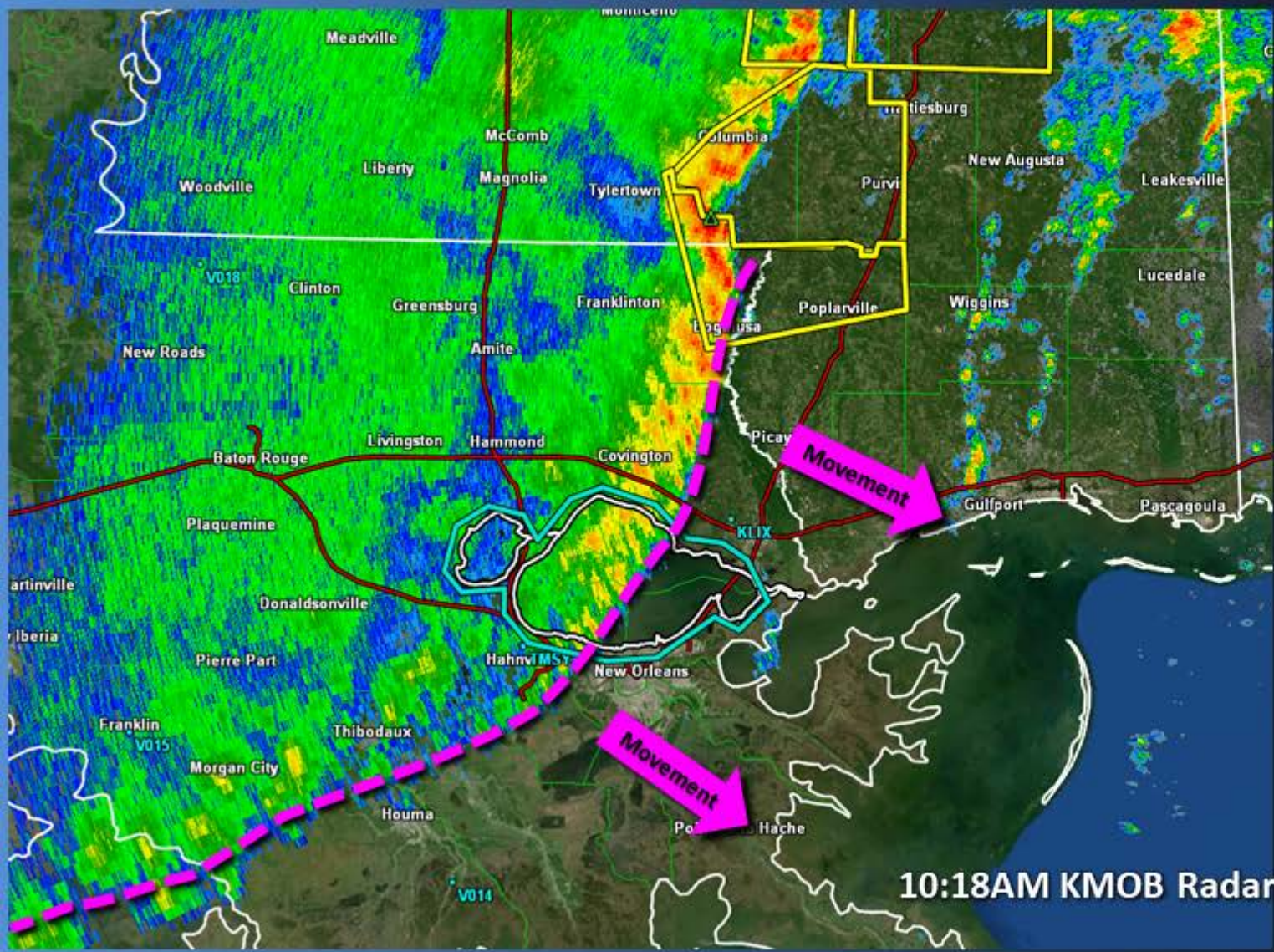


Strong Line of Storms Moving Eastward

10:30 AM CT – January 25, 2024 Update



KEY MESSAGES:

- Strong line of storms halfway through the area moving eastward this morning. The line should exit the area during the afternoon. Isolated strong wind gusts are possible along the line of storms. Light to moderate rain expected behind the line.

HAZARDS:



Brief Gusty Winds



High Winds Over Waters



Intense Rain Rates

SAFETY INFORMATION:

- Stay weather aware!
- Intense rainfall rates may lead to localized flooding. Never cross water covered roads!
- Gusty winds over marine areas could lead to enhanced waves and become dangerous for mariners.